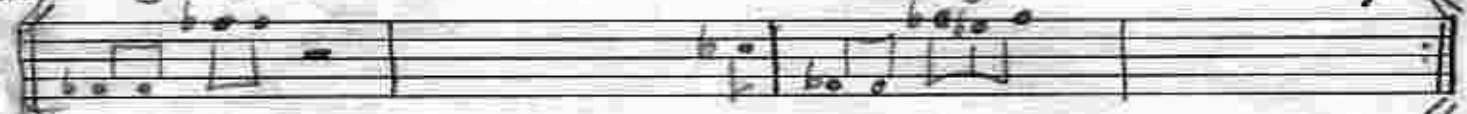


INTRO Bass



to Interlude

A Swing Ab-



straight Eb7



back to  
swing  
no repeats

Interlude

D Swing F#m



FORM (A)<sup>x2</sup> (B)<sup>x2</sup> C<sup>x4</sup> D<sup>x4</sup>

INTRO AFTER SOLOS

CAT BAY

INTERLUDES BETWEEN SOLOS

BACK TO (A) AFTER SOLOS

REPEAT C AT END